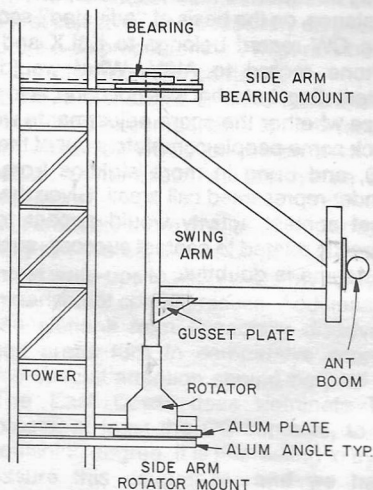


## By Mike Wetzel, W9RE

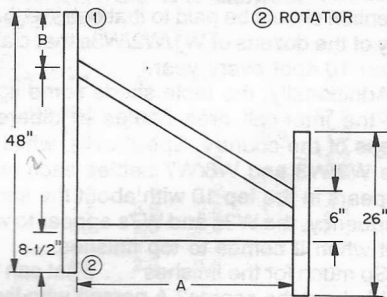
I have used my side arm rotator mounts with Ham-Ms, Hygain Roto-brakes, Tailtwisters and prop pitches. My side arm bearing mounts have used stock flange bearings and homemade wood bearings.



### Fig 1—Rotating Side Arm

	25 G	45 G
A	23-1/2"	30"
B	22-1/2"	18-1/2"

① TOP BEARING  
② ROTATOR



### Fig 2—Swing Arm Details

The side arm mounting seems to exhibit a much larger force on the rotator than would be experienced with the antenna mounted on a straight mast in the conventional way. As verification of this fact, I originally tried using a Ham-M rotator on the